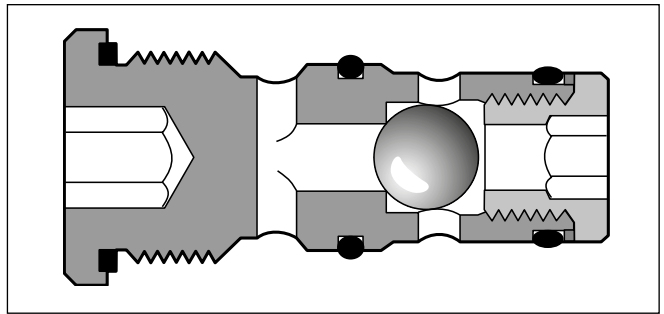
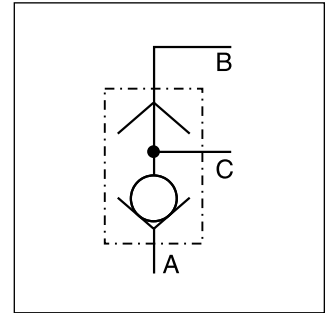


**Characteristics / Ordering Code**

The shuttle valve series SSR is designed as a threaded cartridge valve. All parts are assembled in one unit and easy to mount.

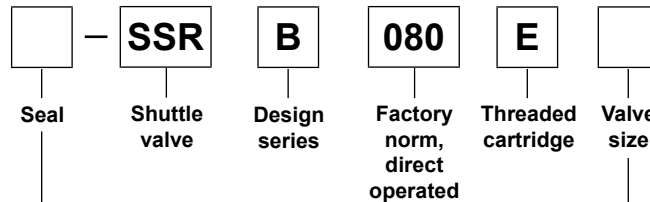
**Features**

- Little space required
- Leak-free
- Easy assembly



**6**

**Ordering code**



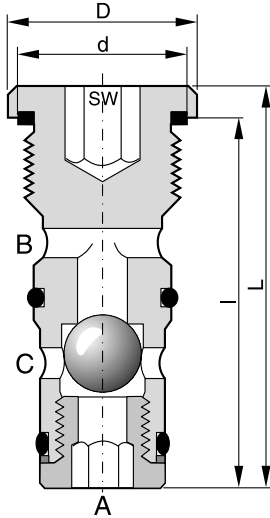
Code	Seal
omit	<b>NBR</b>
V	FPM

Code	Size
<b>06</b>	<b>NG06</b>
<b>10</b>	<b>NG10</b>

**Bold letters =  
Short-term availability**

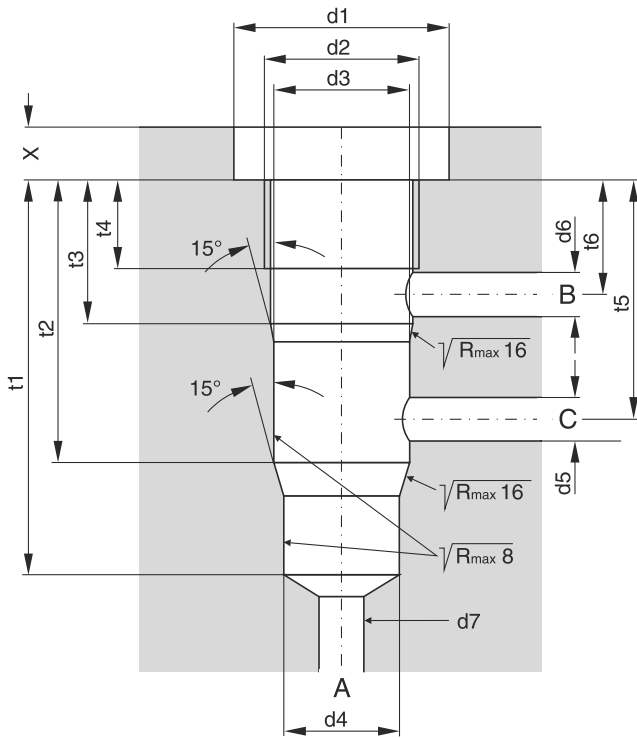
**Technical data**

General			
Design	Threaded cartridge valve		
Mounting position	Unrestricted		
Ambient temperature	[°C]	-20 ... +60	
Nominal size		NG06	NG10
Weight	[kg]	0.5	0.8
Hydraulic			
Flow direction	See symbols		
Fluid	Hydraulic oil as per DIN 51524		
Fluid temperature	[°C]	-20...+70 (NBR: -25...+70)	
Viscosity, permitted	[cSt] / [mm <sup>2</sup> /s]	20 ... 400	
	recommended	[cSt] / [mm <sup>2</sup> /s]	30 ... 80
Filtration	ISO 4406 (1999); 18/16/13		
Nominal pressure	[bar]	350	
Flow	[l/min]	40	60



Dimensions	NG06	NG10
D	23	29
L	48	70
d	M18x1.5	M24x1.5
l	42.5	64
SW	8	12
Tightening torque <sup>1)</sup> [Nm] ± 15 %	40	65

**Mounting cavity**



Dimensions	NG06	NG10
d1	25	35
d2	M18 x 1.5	M24 x 1.5
d3 <sup>H7</sup>	16	22
d4 <sup>H7</sup>	14	20
d5 <sub>max.</sub>	6	9
d6 <sub>max.</sub>	6	9
d7 <sub>max.</sub>	13.5	19.5
t1	45	68
t2	32	51
t3	16	20
t4	10	15
t5	27.5	40
t6	12	14.5
X	6	7

**Seal kits**

NG	NBR seals	FPM seals
06	SK-SSRB0E06	SK-SSRB0E06V
10	SK-SSRB0E10	SK-SSRB0E10V

<sup>1)</sup> Please note the material specification for tightening torque in chapter 12, "accessories"